



Mercer Group, Inc

LIGHTING PRODUCTS GUIDE



TABLE OF CONTENTS

Why LMT	pg 5-6
Ornamental Lighting	pg 7-14
Wiring and Accessories	pg 15-20
Haven	pg 21
Cape May	pg 23
Neptune	pg 25
Solar Lighting	pg 27-30
Accent Lighting	pg 31-36
About LMT	pg.37-38









AMBIANCE | SAFETY | SECURITY

Each year, LMT Mercer Group, Inc. adds more lighting options from which customers can choose. Lighting is one way customers can add a unique touch to their decks, fence or railing. We construct our lighting products with only high-grade, commercial components.

WHY LMT?

Our mission is to provide contractors and homeowners LED lighting solutions that are easy to install, reliable and affordable while offering unsurpassed customer service. Add safety, security, ambiance and increase enjoyment of your outdoor living space.





Our ornamental product line is the perfect accent to your property's deck and fencing. Offered in both low voltage and solar allows flexibility in installation and a variety of applications. With cap sizes from 2" through 5.5", our ornamental line is suited for most post sizes and our accent lights are ideal for stairs and discreet accent lighting on decks.

Ornamental Downward Low Voltage Post Cap Light



STANDARD COLORS



White



Black



Textured Black

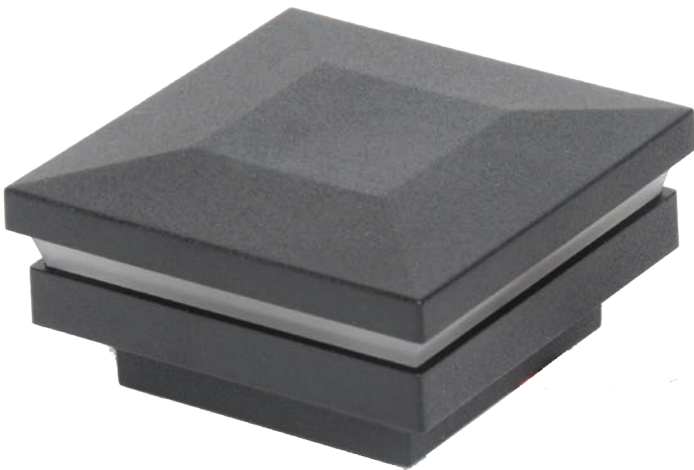
Draws 0.80 Watts, Available in 3000 & 5000 Kelvin

2"-4" 35 Lumens & 4.25"-5.5" 50 Lumens.

*Requires a LED Low Voltage Power Supply

SIZES OFFERED | 2", 2.5", 3", 3.5", 4", 4.25", 4.5", 5", 5.5"

Ornamental Low Voltage Post Cap Light



STANDARD COLORS



White



Black



Textured Black

Draws 0.80 Watts, Available in 3000 & 5000 Kelvin

2"-4" 25 Lumens & 4.25"-5.5" 40 Lumens.

*Requires a LED Low Voltage Power Supply & Harnessary

SIZES OFFERED | 2", 2.5", 3", 3.5", 4", 4.25", 4.5", 5", 5.5"





Our ornamental product line is the perfect accent to your property's deck and fencing. Offered in both low voltage and solar allows flexibility in installation and a variety of applications. With cap sizes from 2" through 5.5", our ornamental line is suited for most post sizes and our accent lights are ideal for stairs and discreet accent lighting on decks.

Ornamental Solar Light Post Cap



STANDARD COLORS



Available in 5000 Kelvin, 3 Lumens
(US Patent # 6,722,637)

SIZES OFFERED | 2", 2.5"

Solar Ornamental Post Cap with Accessory Connection



STANDARD COLORS



Will power (2) ea. Solar Accessory Lights
*Requires Accessory Lights and Harnessary sold separately
(US Patent # 6,722,637)

SIZES OFFERED | 2", 2.5"





Our ornamental product line is the perfect accent to your property's deck and fencing. Offered in both low voltage and solar allows flexibility in installation and a variety of applications. With cap sizes from 2" through 5.5", our ornamental line is suited for most post sizes and our accent lights are ideal for stairs and discreet accent lighting on decks.

Ornamental Downward Solar Light Post Cap



STANDARD COLORS



Available in 5000 Kelvin,
3 Lumens
(US Patent # 6,722,637)

SIZES OFFERED | 2", 2.5"

Ornamental Solar Light Post Cap



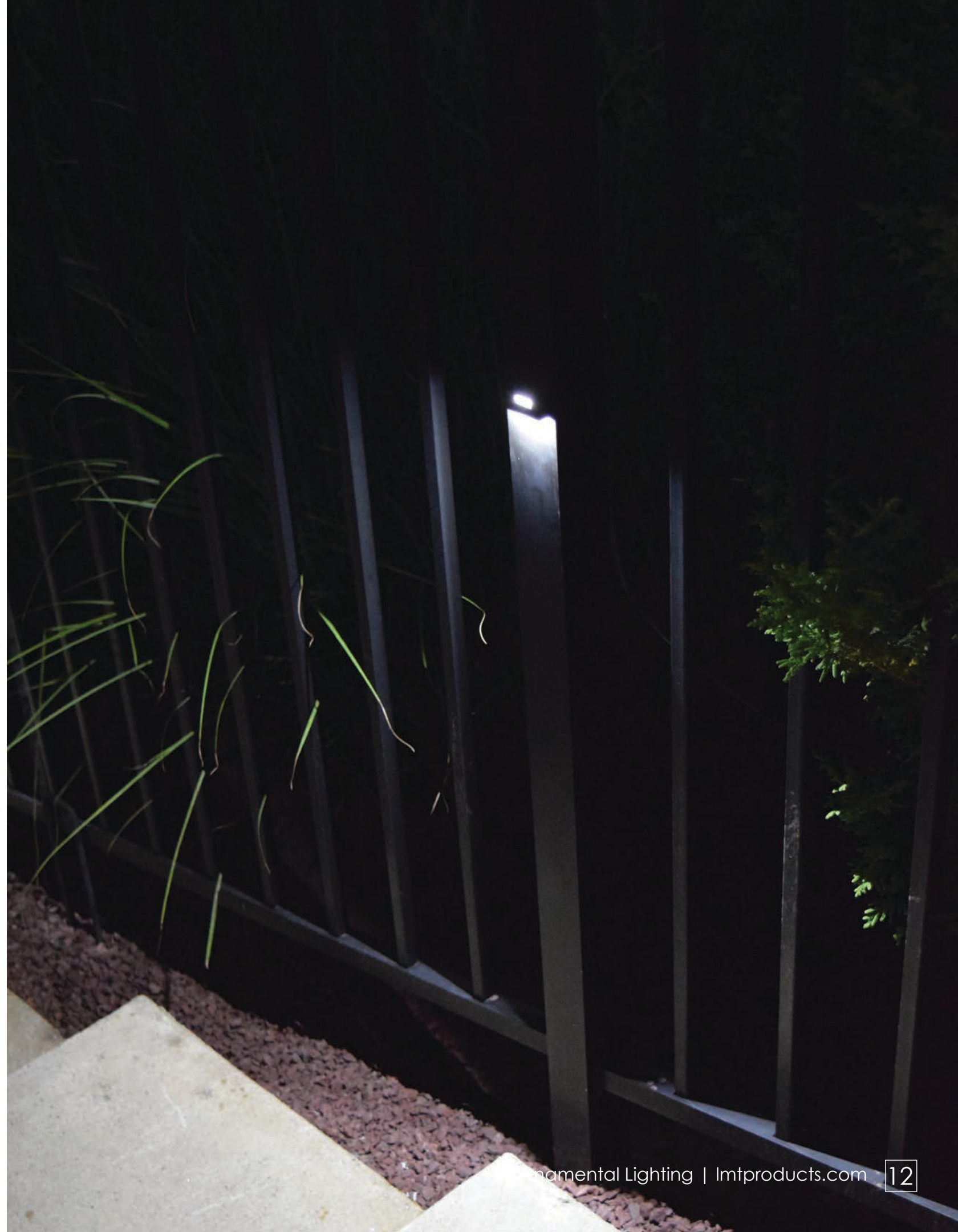
STANDARD COLORS



Available in 5000 Kelvin,
3 Lumens
(US Patent # 6,722,637)

SIZES OFFERED | 3", 3.5"





Our ornamental product line is the perfect accent to your property's deck and fencing. Offered in both low voltage and solar allows flexibility in installation and a variety of applications. With cap sizes from 2" through 5.5", our ornamental line is suited for most post sizes and our accent lights are ideal for stairs and discreet accent lighting on decks.

Ornamental Combo Low Voltage Post Cap Light



STANDARD COLORS



Draws 0.80 Watts, Available in 3000 & 5000 Kelvin
2"-4" 60 Lumens & 4.25"-5.5" 90 Lumens.

*Requires a LED Low Voltage Power Supply & Harnessary

SIZES OFFERED | 2", 2.5", 3", 3.5", 4", 4.25", 4.5", 5"

Solar Ornamental Side Light

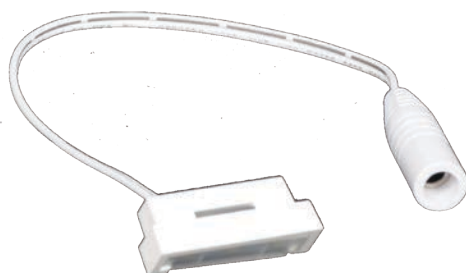


STANDARD COLORS



Dimensions: 1.50" x 0.63" x 0.39", 10" wire lead, End Connector: 0.375" Diameter, Contains: Fixture & (2ea.) Screws, 3 Lumens.
(US Patent # 6,722,637)

Ornamental Low Voltage Side Light



STANDARD COLORS



Dimensions: 1.50" x 0.63" x 0.39", 10" wire lead, End Connector: 0.5" Diameter, Contains: Fixture & (2ea.) Screws. Draws 0.40 Watt, Available in 3000 & 5000 Kelvin, 25 Lumens

*Requires a LED Low Voltage Power Supply





LMT produces a wide selection of wiring products to make installation quick and easy. With multiple harness lengths and various splitters, allows for simple "plug and play" with no cutting or splicing. We also offer transformers in both 12 and 50 watt configurations that are perfectly matched to power the number of lights in your installation with optional dimmers and remotes.

2 Output Splitter Low Voltage LED



For Connection From Male Plug To Light, Splitter, Or Harness. Total Length: 7.5", 1 Female and 2 Male Connectors: 0.50" Diameter

5 Output Splitter Low Voltage LED



For Connection From Male Plug To Light, Splitter, Or Harness. Total Length: 7.5", 1 Female and 5 Male Connectors: 0.50" Diameter: 2 Caps For Unused Outputs

Low Voltage LED Harness



For Connection From Male Plug To Light, Splitter, Or Harness.. Female and Male Connector: 0.50" Diameter

SIZES OFFERED | 2', 5', 7', 9'





LMT produces a wide selection of wiring products to make installation quick and easy. With multiple harness lengths and various splitters, allows for simple "plug and play" with no cutting or splicing. We also offer transformers in both 12 and 50 watt configurations that are perfectly matched to power the number of lights in your installation with optional dimmers and remotes.

Solar Harness



Solar Harness for Connection From Female Plug to Light or Splitter, or Harness.
Total Length: 24", Male and Female Connector: 0.375" Diameter.

SIZES OFFERED | 2'

2-Output Solar Splitter



Solar Harness for Connection From Female Plug to Light, Splitter, or Harness. Total Length: 7.5", 2 Female and 1 Male Connectors: 0.375" Diameter.



LMT produces a wide selection of wiring products to make installation quick and easy. With multiple harness lengths and various splitters, allows for simple "plug and play" with no cutting or splicing. We also offer transformers in both 12 and 50 watt configurations that are perfectly matched to power the number of lights in your installation with optional dimmers and remotes.

50 Watt LED Low Voltage Smart Power Supply w/photo eye, timer, remote and bluetooth



50 Watt, 12 Volt DC, 4.2 Amps Programmable Smart Power Supply includes a uniquely paired remote key fob, 4' output wire lead with molded Tee connector, and 5' wired remote photocell. Built in Bluetooth controls, LED dimmer, timer (1-8 hours or dusk to dawn), teachable photo eye, and diagnostic troubleshooting modes. Android and iPhone apps available. Add up the total wattage of all the bulbs you will be using. This will give you an estimate of which size lighting transformer you will need. Will power approximately a maximum of 65 each (0.8 Watts) lights.

12 Volt/12 Watt Power Supply w/ Photo Eye



12 Watt, 12 Volt DC, 1 AMPs with 9' wire lead with female connector and a TEE connector. Add up the total wattage of all the bulbs you will be using. This will give you an estimate of which size lighting transformer you will need. Will power approximately a maximum of 16 each (0.8 Watts) lights.

Dimmer for 12 Watt LED Low Voltage Power Supply w/ Remote



For Use With 12 Watt Power Supply, Installed Between Transformer and Photo Eye.
Includes Remote Control.





Our Haven line is offered in sizes from 3-5/8" through 6" and in four low voltage configurations. There are three lens choices and a downward version all offered in multiple color options.

Haven

The Designer Finishes products allows for personal customizing of the post caps using accent colors and textured finishes. There are five Designer colors with textured finishes and four standard colors giving you numerous options to choose from. The Neptune, Cape May and Haven post caps can have different top and lower base (skirt).

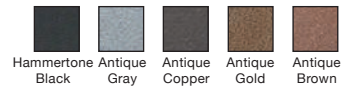


Haven Low Voltage

STANDARD COLORS

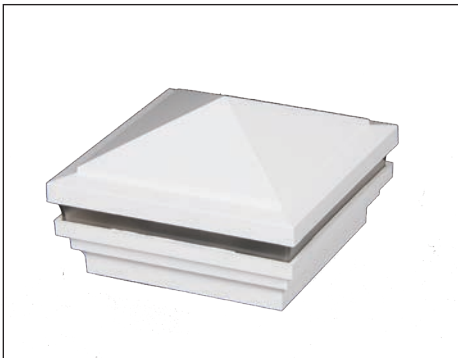


DESIGNER FINISHES



SIZES OFFERED | 3-5/8", 4", 4-1/2", 5", 5-5/8", 6"

- Haven Low Voltage: Draws 0.80 Watts, Available in 3000 & 5000 Kelvin, 22 Lumens.
- Haven Scalloped Low Voltage: Draws 0.80 Watts, Available in 3000 & 5000 Kelvin, 22 Lumens.
- Haven Halo Low Voltage: Draws 0.80 Watts, Available in 3000 & 5000 Kelvin, 22 Lumens.
- Haven Downward Low Voltage: Draws 0.80 Watts, Available in 3000 & 5000 Kelvin, 36 Lumens.



Haven Halo Low Voltage Post Cap Light



Haven Scalloped Low Voltage Post Cap Light



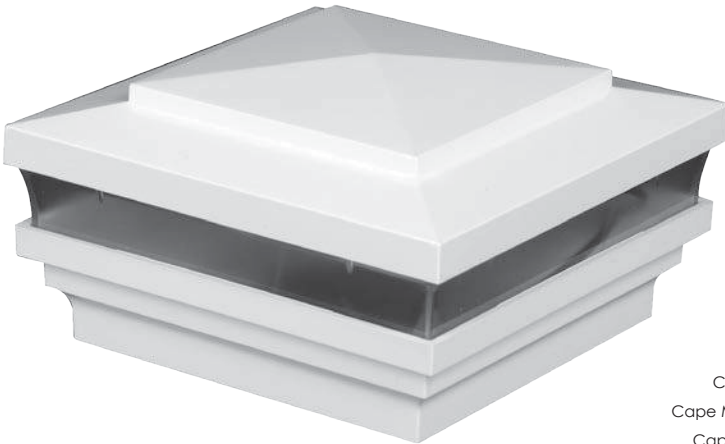
Haven Downward Low Voltage Post Cap Light





Our Cape May line is offered in sizes from 3-5/8" through 6" and in four low voltage configurations and five solar versions. There are three lens choices and a downward version in low voltage and two solar lens choices all offered in multiple color options.

Cape May



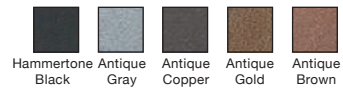
Cape May Low Voltage

The Designer Finishes products allows for personal customizing of the post caps using accent colors and textured finishes. There are five Designer colors with textured finishes and four standard colors giving you numerous options to choose from. The Neptune, Cape May and Haven post caps can have different top and lower base (skirt).

STANDARD COLORS



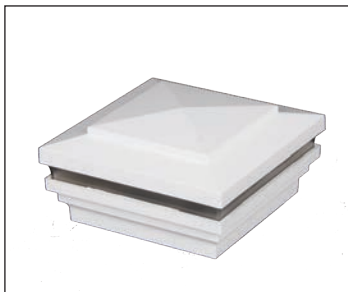
DESIGNER FINISHES



SIZES OFFERED | 3-5/8", 4", 4-1/2", 5", 5-5/8", 6"

- Cape May Low Voltage: Draws 0.80 Watts, Available in 3000 & 5000 Kelvin, 22 Lumens.
- Cape May Scalloped Low Voltage: Draws 0.80 Watts, Available in 3000 & 5000 Kelvin, 22 Lumens.
- Cape May Halo Low Voltage: Draws 0.80 Watts, Available in 3000 & 5000 Kelvin, 22 Lumens.
- Cape May Downward Low Voltage: Draws 0.80 Watts, Available in 3000 & 5000 Kelvin, 3366 Lumens.
- Cape May Solar: Available in 5000 Kelvin, 3 Lumens.
- Cape May Scalloped Solar: Available in 5000 Kelvin, 3 Lumens.
- Cape May Halo Solar: Available in 5000 Kelvin, 3 Lumens.
- Cape May Downward: Available in 5000 Kelvin, 6 Lumens.
- Cape May Accessory: Will power (2) ea. Solar Accessory Lights

Solar Post Cap | US Patent #6,722,637



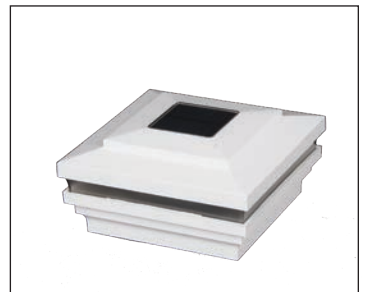
Cape May Halo Low Voltage Post Cap Light



Cape May Downward Low Voltage Post Cap Light



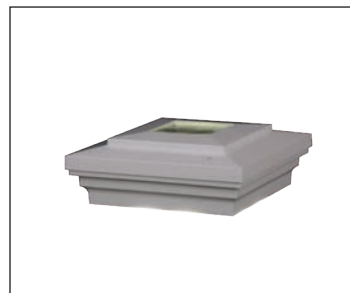
Cape May Scalloped Low Voltage Post Cap Light



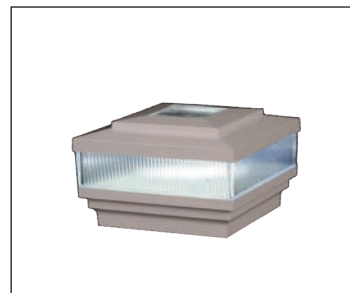
Cape May Halo Solar Post Cap Light



Cape May Solar Post Cap Light



Cape May Solar Post Cap with Accessory Connection



Cape May Scalloped Solar Post Cap Light



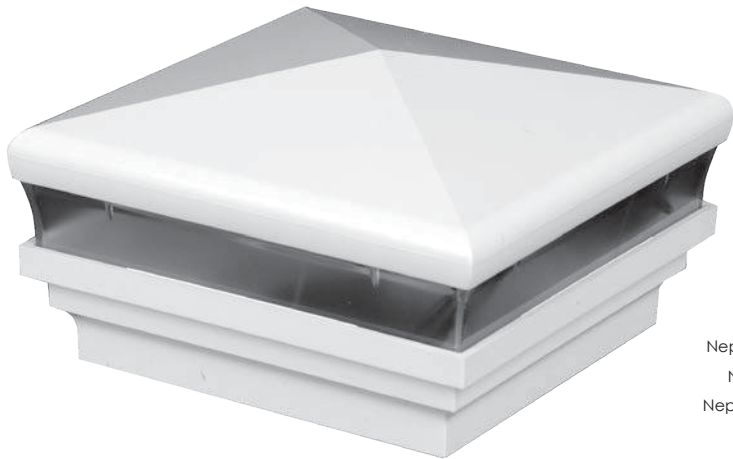
Cape May Downward Solar Post Cap Light





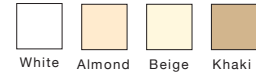
Our Neptune line is offered in sizes from 3-5/8" through 6" and in four low voltage configurations and five solar versions. There are three lens choices and a downward version in low voltage and two solar lens choices all offered in multiple color options.

Neptune Low Voltage

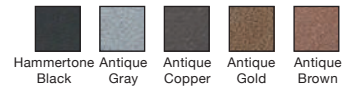


The Designer Finishes products allows for personal customizing of the post caps using accent colors and textured finishes. There are five Designer colors with textured finishes and four standard colors giving you numerous options to choose from. The Neptune, Cape May and Haven post caps can have different top and lower base (skirt).

STANDARD COLORS



DESIGNER FINISHES

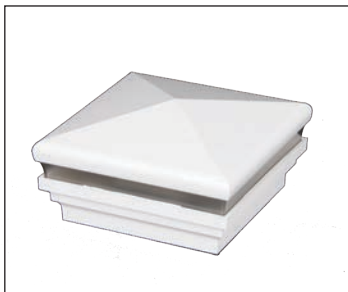


SIZES OFFERED | 3-5/8", 4", 4-1/2", 5", 5-5/8", 6"

- Neptune Low Voltage: Draws 0.80 Watts, Available in 3000 & 5000 Kelvin, 22 Lumens.
- Neptune Scalloped Low Voltage: Draws 0.80 Watts, Available in 3000 & 5000 Kelvin, 22 Lumens.
- Neptune Halo Low Voltage: Draws 0.80 Watts, Available in 3000 & 5000 Kelvin, 22 Lumens.
- Neptune Downward Low Voltage: Draws 0.80 Watts, Available in 3000 & 5000 Kelvin, 36 Lumens.
- Neptune Solar: Available in 5000 Kelvin, 3 Lumens.
- Neptune Scalloped Solar: Available in 5000 Kelvin, 3 Lumens.
- Neptune Halo Solar: Available in 5000 Kelvin, 3 Lumens.
- Neptune Downward: Available in 5000 Kelvin, 6 Lumens.
- Neptune Accessory Will power (2) ea. Solar Accessory Lights.

*Requires Accessory Lights and Harnesses sold separately. Available in 5000 Kelvin, 3 Lumens.

Solar Post Cap | US Patent #6,722,637



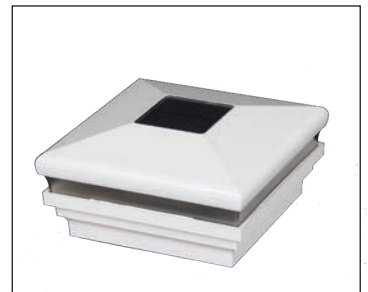
Neptune Halo Low Voltage Post Cap Light



Neptune Downward Low Voltage Post Cap Light



Neptune Scalloped Low Voltage Post Cap Light



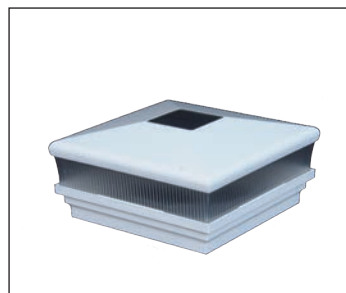
Neptune Halo Solar Post Cap Light



Neptune Solar Post Cap Light



Neptune Solar Post Cap with Accessory Connection



Neptune Scalloped Solar Post Cap Light



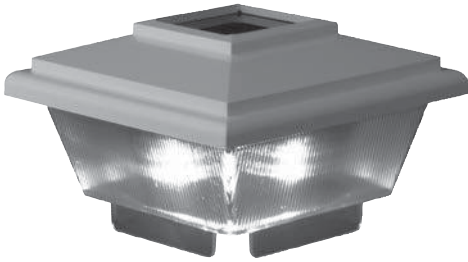
Neptune Downward Solar Post Cap Light






Our accent lights are a perfect compliment to stair, under rail or flush deck lighting. These products offer improved safety and visibility, as well as look great in any outdoor living space. Our numerous color options ensure a great match to our other lighting lines.

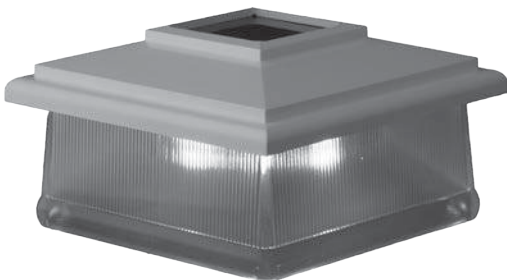
Solar Accent Post Cap Light




STANDARD COLORS 
White

Available in 5000 Kelvin, 3 Lumens
(US Patent # 6,722,637)

Classic Solar Post Cap Light



STANDARD COLORS 
White

Available in 5000 Kelvin, 3 Lumens
(US Patent # 6,722,637)

Cambridge Solar Post Cap Light



STANDARD COLORS    
White Almond Beige Khaki

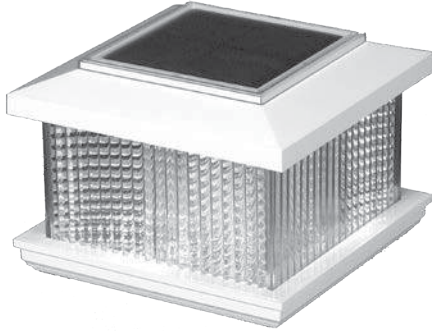
Available in 5000 Kelvin, 3 Lumens
(US Patent # 6,722,637)





Our accent lights are a perfect compliment to stair, under rail or flush deck lighting. These products offer improved safety and visibility, as well as look great in any outdoor living space. Our numerous color options ensure a great match to our other lighting lines.

Galaxy Solar Post Cap Light



STANDARD COLORS



Fits externally over 4" Sq." or 5" Sq. post, 4" Sq. solar panel, Dual NiMh rechargeable batteries, 4 ea. LED lights, Up to 12 hours of light, includes adapter for use with 4" posts, 3-1/2" post adapter available separately for 3-1/2" PVC post or 4" Sq. wood post, 9000 Kelvin, 3 Lumens
(US Patent # 6,722,637)

Galaxy Solar Wedge Accent Light



STANDARD COLORS



1.875" x 4.50" x 1.5" 2 LED Lights NiMh-Cad Batteries, 9000 Kelvin, 7 Lumens
(U.S. Patent #D553,783)

Galaxy Ornamental Solar Wedge



STANDARD COLORS



3" x 2-1/2" x 7", Ultra bright 3 LED lights, 3 rechargeable NiMh batteries. Attaches to most surfaces. Includes: screws and 6" double-sided tape, No wiring required, Auto on/off. 9000 Kelvin, 7 Lumens
(U.S. Patent #D553,783)



Our accent lights are a perfect compliment to stair, under rail or flush deck lighting. These products offer improved safety and visibility, as well as look great in any outdoor living space. Our numerous color options ensure a great match to our other lighting lines.

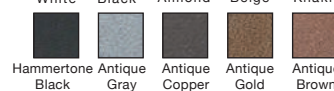
Low Voltage Scalloped Dome Side Light & Dome Side Light



STANDARD COLORS



DESIGNER FINISHES



Diameter: 2.75", Height 1.344", (2) ea. LED w/ 9" lead wire. End Connector: 0.5" Diameter & (2) ea. screws, Draws 0.80 Watts, Available in 3000 & 5000 Kelvin, 30 Lumens
*Requires a LED Low Voltage Power Supply.

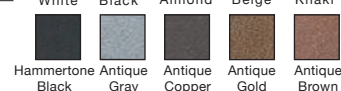
Solar Scalloped Dome Side Light & Dome Side Light



STANDARD COLORS



DESIGNER FINISHES



Diameter: 2.75", Height 1.344", (2) ea. LED w/ 24" lead wire. End Connector: 0.375" Diameter & (2) ea. screws, 5000 Kelvin, 6 Lumens *Requires a Solar Accessory Connection Cap and Solar Harnesses.



Our accent lights are a perfect compliment to stair, under rail or flush deck lighting. These products offer improved safety and visibility, as well as look great in any outdoor living space. Our numerous color options ensure a great match to our other lighting lines.

Solar Stair/Side Light with 2 covers



STANDARD COLORS
DESIGNER FINISHES



Oval dimensions: 1.130" x 3.223". Contains: (1) ea. Lens w/ (3) ea. LED, (1) ea. Half Cover, (1) ea. Full Cover, & (2) ea. Screws, w/ 9" lead wire. End Connector: 0.5" Diameter for use on Stair and side post applications, Draws 0.40 Watts, Available in 3000 & 5000 Kelvin, 12 Lumens *Requires a LED Low Voltage Power Supply.

Low Voltage Stair/Side Light with 2 covers



STANDARD COLORS
DESIGNER FINISHES



Oval dimensions: 1.130" x 3.223". Contains: (1) ea. Lens w/ (3) ea. LED, (1) ea. Half Cover, (1) ea. Full Cover, & (2) ea. Screws, w/ 9" lead wire. End Connector: 0.5" Diameter for use on Stair and side post applications, Draws 0.40 Watts, Available in 3000 & 5000 Kelvin, 12 Lumens *Requires a LED Low Voltage Power Supply.



Our accent lights are a perfect compliment to stair, under rail or flush deck lighting. These products offer improved safety and visibility, as well as look great in any outdoor living space. Our numerous color options ensure a great match to our other lighting lines.

Flush Deck Light



STANDARD COLORS



Frosted Acrylic

Flush Mount Accent Light, Diameter: 0.995", Depth: 0.685", Contains: (1) ea. LED w/ 9" wire lead, End Connector: 0.5" Diameter, Draws 0.40 Watts, Available in 3000 & 5000 Kelvin, 7 Lumens *Requires a LED Low Voltage Power Supply.

3" Under Rail Light



STANDARD COLORS

DESIGNER FINISHES



Dimensions: 2.97" x 0.52" x 0.35", Diameter, 10" wire lead, End Connector: 0.5" Diameter, Contains: Fixture & (2ea.) Screws. Draws 0.40 Watt, Available in 3000 & 5000 Kelvin, 10 Lumens *Requires a LED Low Voltage Power Supply.



Unlike most manufacturers of lighting products, LMT has in house electrical engineers that engineer, design, test and add customer support on all lighting products. All LMT products are proudly designed and assembled in the USA.

Simple and Easy to Install

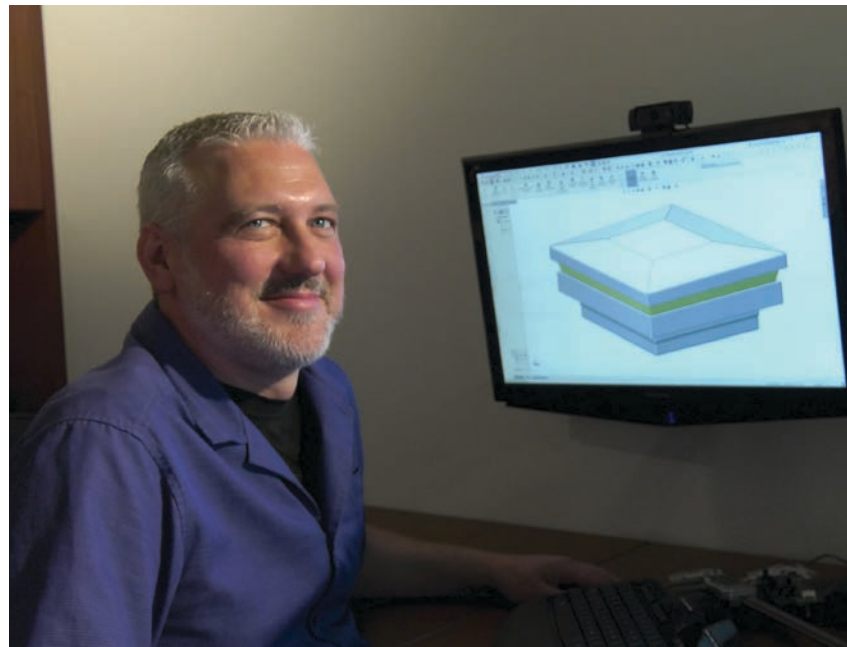
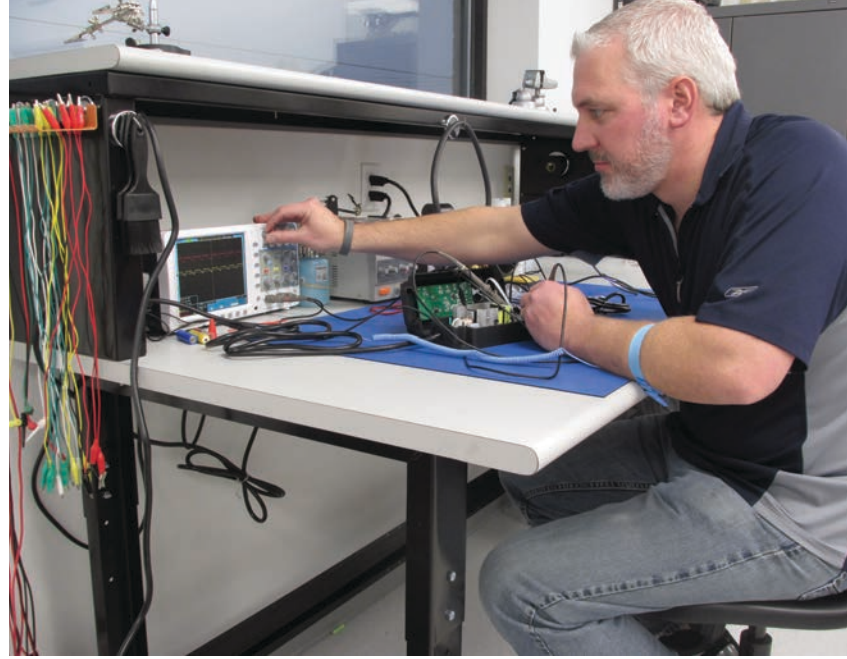
- No wires to cut – plug together wiring harness
- Single power supply for all lights
- No need for an electrician or electrical permits

Long Lasting

- Weather resistant connectors and lights
- Long-lasting LED's rated at 50,000 hours
- Housings are durable and UV stable

Highly Energy Efficient

- Low Voltage DC Power Supply
- Dusk to Dawn light sensor
- Available with remote dimmer switch





lmtproducts.com | 888.570.5252

LMT Mercer Group, Inc